



## South End Row, W8 (£1,500 PW)

**Status:** Let  
**Outside:** Yes  
**Porter:** No  
**Lift:** No

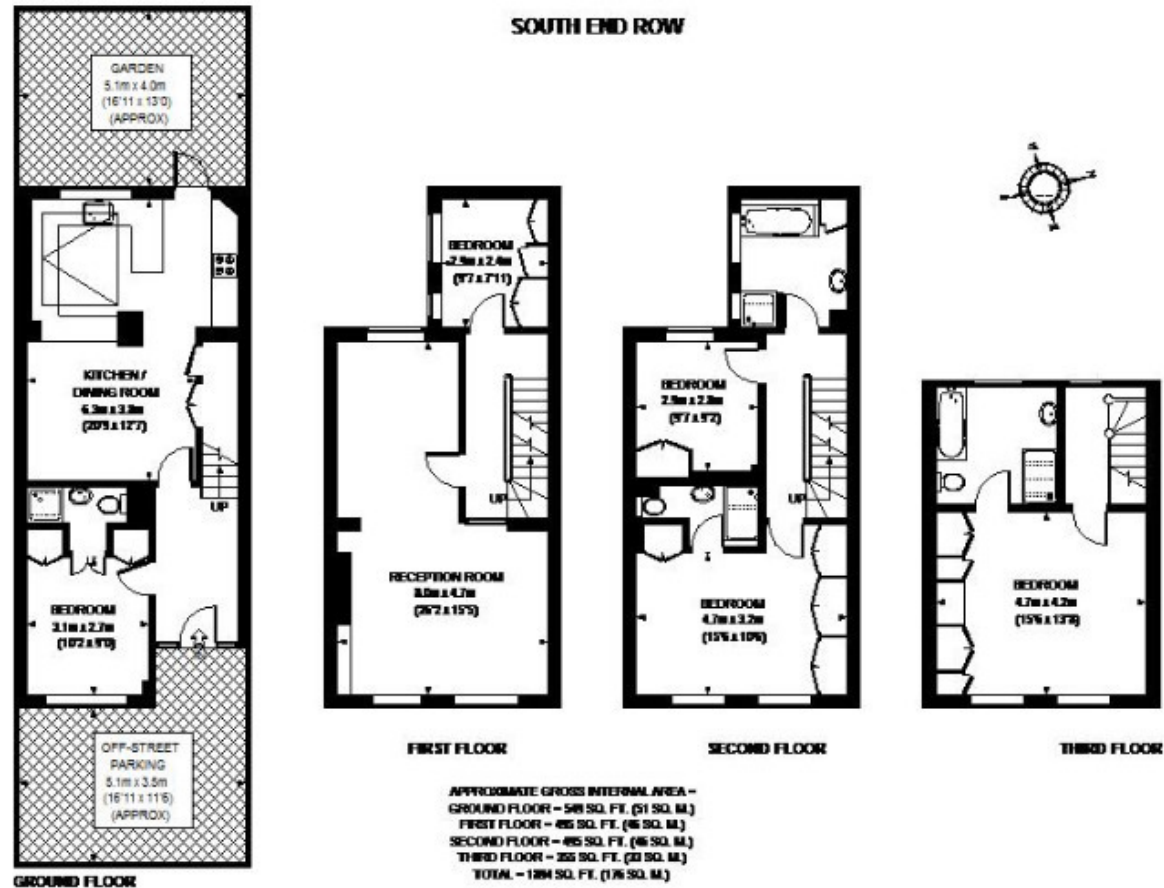
A fantastic four storey townhouse located in the heart of Kensington, offering a large eat-in kitchen, spacious reception room with wooden floors and five bedrooms with excellent storage. There are three en suite bathrooms and one large family bathroom. The house benefits from a beautiful patio garden and a private off street parking space.

ENTRANCE HALL : KITCHEN : RECEPTION ROOM : DINING ROOM : 5 BEDROOMS : 4 BATHROOMS (3 ENSUITE) : GUEST CLOAKROOM : PATIO GARDEN : OFF-STREET PARKING SPACE

Unfurnished

Available by mid-July 2021





The details herein do not form part of any contract and whilst every effort has been made to ensure accuracy this cannot be guaranteed. All reasonable steps have been taken to avoid an error or misdescription arising but all room measurements are approximate; the appliances, heating and electrical systems have not been tested by us and intended purchasers are advised to make their own tests; and reference to alterations to, or use of, an part of the property is not a statement of fact that any necessary planning, building or other consent has been obtained; these matters must be verified by any intending purchaser. The mention or omission of any fixtures or fittings within these particulars is not intended to imply that the same is included within the sale of the property and all particulars are for guidance only and any description or information should not be relied upon as a statement of fact or representation of fact or that the property or its services are in good condition. Thackerays nor any of their employees has any authority to make or give any representation or warranty whatever in relation to this property.