



## Cromwell Road, SW7 (£900 PW)

Larger than the majority of two bedroom apartments within the building and with wonderful views over London's famous skyline the apartment comes with the added benefit of a large balcony. Both double bedrooms are quietly located and as they are on different floors offer a great degree of privacy. Point West provides 24 hour security and the position means excellent amenities including two supermarkets and Gloucester Road underground station are on your doorstep. There is a Harbour Club (membership required) which has great facilities including a newly equipped gym

**Status:** Let  
**Porter:** Yes  
**Lift:** Yes

**Date Available:** 17th September  
**Outside:** Yes

2 Bedrooms  
Bathroom  
Reception Room

Balcony  
Guest Cloakroom

2 Bedrooms : 2 Bathrooms : Reception Room : Kitchen : Balcony : 24 Hour Security : EPC Rating C





915 Point West, SW7

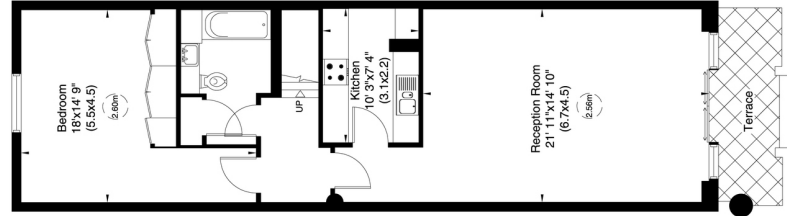
Gross internal area (approx.)

105 Sq m (1127 Sq ft)

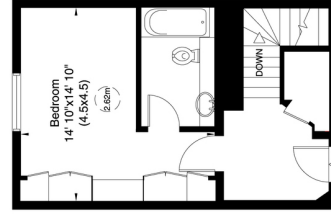
For identification only. Not to Scale



Floor Plan by **capitalgroup** 020 8671 7722



Eighth Floor



Ninth Floor

Not to scale, for guidance only and must not be relied upon as a statement of fact. All measurements and areas are approximate only (and have been prepared in accordance with the current edition of the RICS Code of Measuring Practice).